

## Editorial

It rarely happens in our Newsletter that there is one message which is so clearly the most important one. But this time the new EURA journal is a major development in the life of our network and we have to say a big "Thank You" to Rob Atkinson who put a lot of time and effort in all the necessary preparations and without whom this new venture would not have happened. It was a long time ago when we first informed members about our plans to establish a new journal. The process of preparation took a while, perhaps somewhat longer than most of us expected. But here it is. As you will read inside, the first issue will be launched in early 2008. Rob has done a great job and now, the success of the initiative depends on all of us to publicise the journal widely in Europe and beyond (we count on you Robin for the US market) and provide interesting papers, which might be published there. I am sure we can deliver!

A Journal is so important because it concerns one of the major functions of international organizations such as EURA – exchanges of ideas and research experience. The journal, meetings and conferences contribute enormously to our public profile vis-à-vis our members and the wider community of researchers and practitioners interested in urban studies, the journal will offer a new avenue to exchange ideas and develop urban research. In the present issue of the Newsletter you will also find information about another key EURA activity, i.e. international conferences, including the last reminder about the Glasgow conference in September 2007 and the first set of details concerning the EURA bi-annual conference in Milan next year. You are most welcome to attend both of our events.

Last but not least, I would like to remind you that in our previous Newsletter we announced (together with JUNIUS – an initiative of junior researchers) the special prize for junior researchers investigating urban issues. I hoped to be able to announce results of the competition in this Newsletter. However, we were inundated with high quality entries and hot discussions of the jury (over the main prize) still

continue as I write this editorial. So, more suspense for JUNIUS members and the announcement will be made in the Autumn issue of the newsletter.

I am very much looking forward seeing many of you in Glasgow in the not-too-distant-future.

Pawel Swianiewicz

### Editorial Team

Prof Rob Atkinson

Dr Laurence Carmichael

Julie Trigg

## The aims of EURA

- To encourage international exchange and co-operation in relation to urban research
- To stimulate and encourage interdisciplinary and cross-national urban research
- To contribute to urban policy debates.

### INSIDE THIS ISSUE

Conference news and information .....	p2
Recent publications .....	p7
Urban research news and information ....	p8
EURA developments .....	p13
Network: English Historic Towns Forum (EHTF) .....	p14
EURA 10th anniversary conference in Glasgow, 2007 .....	p15
Milan conference .....	p16

## Conference News and Information

This section provides news and information about international conferences in Europe and elsewhere. If you have any material you would like to see in the next issue please forward it to [Laurence.Carmichael@uwe.ac.uk](mailto:Laurence.Carmichael@uwe.ac.uk)

### Future conferences

#### ENHR INTERNATIONAL CONFERENCE SUSTAINABLE URBAN AREAS

25-28 June 2007, Rotterdam, The Netherlands

The conference theme is Sustainable Urban Areas. The conference will highlight the many aspects of housing and urban issues in relation to sustainability. Sustainability is a broad concept that can be addressed from many different angles. Attention to all approaches and their interrelationships is the key to a sustainable society. A common arrangement is to distinguish social, economic, spatial and environmental qualities relating to sustainability.

In the conference these will all come to the fore. Plenary sessions with appealing keynote speakers will address current debates in housing like the future role of social housing and the pros and cons of the demolition of housing estates. In addition to these purely housing related topics, items related to sustainability will also be discussed, like transformation processes within the city and at the regional level.

Paper sessions will allow participants to present their research in the urban and housing domain. Most of these sessions will be organised by the regular ENHR working groups, but a number of additional paper tracks will cluster the urban issues not covered by the existing ENHR working groups.

#### ENHR working groups that have confirmed their participation:

1. Housing Finance
2. Migration, Residential Mobility and Housing Policy
3. The Residential Context of Health
4. Housing Economics
5. Poverty Neighbourhoods
6. Welfare Policy, Homelessness and Housing Exclusion
7. Housing Regeneration and Maintenance
8. Residential Environments and People
9. Legal Aspects of Housing, Land and Planning
10. Home Ownership and Globalisation
11. Metropolitan Dynamics: Urban Change, Market and Governance
12. Housing Market Dynamics
13. Housing and Minority Ethnic Groups
14. East European Housing and Urban Policy
15. Housing and Urban Sustainability
16. Institutional and Organisational Change in Social Housing Organisations in Europe
17. Housing and Sustainable Urbanisation in Developing Countries
18. Housing and Social Theory

#### Additional workshops:

19. The Sustainable City
20. Spatial Planning and Governance at the Regional Level
21. Tools to Facilitate Housing and Urban Processes

A description of the ENHR working groups and additional themes are available on the conference website:  
[www.enhr2007rotterdam.nl](http://www.enhr2007rotterdam.nl).

The congress location is the Doelen, a concert and congress building situated in the cultural and professional heart of Rotterdam and only a stone's throw from Central Station and the shopping district. Rotterdam is an interesting city from an architectural, housing and urban point of view and hosts important architecture and housing institutes. 2007 has been declared the Year of Architecture by the city.

A number of social events will be organised, taking advantage of the specific features of the city of Rotterdam along the water. A welcome reception in the Rotterdam City Hall, a dinner on board Europe's largest paddle steamer and a dinner in the Laurens church will offer participants the opportunity to meet with other participants in a relaxed environment. A general tour of Rotterdam and several interesting field trips will give insight into the housing and urban practice of the region of Rotterdam.

#### Offered fieldtrips:

1. Middle incomes in the city and innovative concepts in renting and ownership.
2. Urban restructuring in post-war areas in progress (Pendrecht)
3. Tension and opportunities between city and urban region (Carnisselande)
4. The issue of integration and multicultural building (Bospolder/Tussendijken)
5. The broad interpretation of the tasks of a housing association (Oude Noorden)
6. Transformation of the former harbour areas in the city (CityPorts project)
7. The development of a VINEX area (Nesseland)
8. Alternative forms of housing for the elderly
9. Sustainability in the urban restructuring and renovation of the district of Duindorp and the use of sustainable materials and innovative technical applications (water, solar energy)
10. Leisure and urban development (Rotterdam waterfront developments)
11. Living and industrial areas: the role of disaster management (the district of Heijplaat and the fire brigade)
12. Kadaster / Dutch Land Registry Office

#### For further details:

[www.enhr2007rotterdam.nl/info@enhr2007rotterdam.nl](http://www.enhr2007rotterdam.nl/info@enhr2007rotterdam.nl)

## **AESOP CONFERENCE 'PLANNING FOR THE RISK SOCIETY: DEALING WITH UNCERTAINTY, CHALLENGING THE FUTURE'**

10-14 July 2007, Naples, Italy

The conference's main theme, the risk society, is not just a concern for the hosting city, but more generally a challenging issue to planning theorists and practitioners.

As a concept, risk includes different meanings and dimensions, such as natural risk, security, human risk on the environment, conflicts and social marginality in peripheral areas. In this perspective, it is to be connected to the more "classic" issue of uncertainty as a basic dimension of planning practice, rising new questions on contemporary metropolitan government all over Europe. Studies on this matter – such as Beck's and Giddens's in the field of social sciences – open a new theoretical framework where the relation between planning and ethics becomes a key-issue, in a planning perspective based on shared values such as trust, cooperation and mutual care.

Consequently, risk deals also with social instability, marginality and fragmentation issues, as some recent EU urban policies have stressed out focusing on strategies of cooperation, inclusion and partnerships.

As a local mainframe, risk is mainly related to the volcanic risk in Napoli metro area: in these past years, some cultural shift occurred in plans and policies dealing with natural risk, moving from an "emergency planning ideology" to a deeper concern for environmental and landscape planning issues, as well as local-based development policies.

All over Europe, in times of global changes and conflicts, this concern for risk shows different declinations, and the Aesop Conference can be a starting point to put the debate forward with original and innovative research contributions.

### **For further details:**

Organisation office

E-mail: [organization@aesop2007napoli.it](mailto:organization@aesop2007napoli.it)

## **NEW FRONTIERS? SOCIAL POLICY IN THE 21ST CENTURY: AN INTERNATIONAL CONFERENCE - THE 41ST SOCIAL POLICY ASSOCIATION ANNUAL CONFERENCE**

23-25 July 2007, University of Birmingham, UK

Themes will include:

Poverty and Social Exclusion - Older people and Later life

- History
- Labour Markets
- Children and Families

- Crime and Criminal Justice
- Environment
- Health and Social Care
- Housing
- User perspectives
- Inter-Professional working
- Refugees and asylum seekers
- Teaching and Learning
- Research Methods and Methodologies
- International Social Policy
- Global Social Policy

### **For further details:**

E-mail: [SPAconf@contacts.bham.ac.uk](mailto:SPAconf@contacts.bham.ac.uk)

[www.social-policy.com/conferences.aspx](http://www.social-policy.com/conferences.aspx)

## **THE 4TH ECPR GENERAL CONFERENCE**

6-8 September 2007, Pisa Italy

The fourth ECPR Conference will take place in Pisa, Italy 6-8 September 2007. All panels and the registration and book exhibition area will be located in the host institution, the University of Pisa, which is centrally located and near many hotels and restaurants.

The academic convenor for the main conference programme will be the ECPR Academic Director, Martin Bull. The organizer of the special section on The Crisis of Representation is Philippe Schmitter from the European University Institute.

The plenary lecture will be given by Stefano Bartolini.

### **For further details:**

The local organizer is Luciano Bardi and is assisted by Eugenio Pizzimenti and Enrico Calossi.

Tel: +(39) 050 2212 495

Fax: +(39) 050 2212 400

[www.essex.ac.uk/ecpr/events/generalconference/pisa/index.aspx](http://www.essex.ac.uk/ecpr/events/generalconference/pisa/index.aspx)

## **10TH ANNIVERSARY EURA CONFERENCE: 'THE VITAL CITY'**

12-14 September 2007, Glasgow, UK

**EURA EVENT**

This is a major conference on the theme of The Vital City being organised on behalf of the European Urban Research Association (EURA) by the Department of Urban Studies, University of Glasgow.

Further information on this conference can be found on page 15.

**For further details:**

Professor Ivan Turok  
Department of Urban Studies  
University of Glasgow  
25 Bute Gardens  
Glasgow G12 8RS  
Scotland, UK  
E-mail: I.Turok@socsci.gla.ac.uk

**3rd INTERNATIONAL CONGRESS ON  
'COMMUNITY DEVELOPMENT:  
GLOBAL AND LOCAL CHALLENGES'**  
26-28 September 2007, Lucerne, Switzerland

The Lucerne University of Applied Sciences and Arts, Lucerne School of Social Work (HSA) is organising the 3rd international congress on "Community Development: Global and Local Challenges" for September 2007. The congress continues the course of the first one which took place in Bordeaux (2003) and the second in Sao Paolo (2005). It aims to explore the role and meaning of 'community development' and 'animation socioculturelle' in response to challenges posed by globalisation. It also aims to initiate an exchange between the different traditions and discourses as well as launching a broad international network.

**For further details:**

Web: [www.communitydevelopment2007.ch](http://www.communitydevelopment2007.ch)

**3rd INTERNATIONAL CONFERENCE OF THE  
SOCIAL CAPITAL FOUNDATION  
'MULTI-ETHNICITY: A BOON OR A BANE?'**  
15-19 November 2007, Honolulu, Hawaii

Multi-ethnicity is subject to a heavily contested debate. Its importance for society is huge: first, because it developed considerably in the Western countries in only a few decades; second, because its emergence involves - beyond an increased ability for cross-cultural communication - the transformation of crucial ancestral dimensions, such as culture, biology, family relationships, and relation to ancestors, as well as concepts of sexuality and death, and belonging to a nation or community.

These transformations may have considerable impact on social behaviour in a wide range of contexts, including economic life and political democracy. All these transformations are far from being an "easy process", contrary to what political leadership may suggest.

This conference will bring together social scientists, economists, policymakers, social workers and the widest spectrum of the involved players to explore the issues arising in an increasingly multiethnic society. The objective is to make progress on the understanding of these issues, by

shedding light on some current developments and drafting innovative, practical responses.

The Social Link Cycle is a line of conferences dedicated to the bond between people within society, and its contemporary crisis.

**For further details:**

E-mail: [conferences@socialcapital-foundation.org](mailto:conferences@socialcapital-foundation.org)  
Web: <http://www.socialcapitalfoundation.org/conferences/synopsis.htm>

**WORLD FORUM ON SUSTAINABLE MOBILITY**  
10-12 December 2007, Nantes, France

The Pays de la Loire region and the City of Nantes support the Nantes International Convention Centre to organize the 1st World Forum on Sustainable Mobility.

While our planet is at the same time facing climatic changes, as well as a sharp decline in oil-based resources, it is within the responsibility of local authorities to orchestrate the mobility of its citizens and the transportation of goods in urban and regional areas.

The debates and exchanges facilitated in Nantes by the World Forum on Sustainable Mobility, between elected representatives, technicians, specialists and researchers will focus on policies and governance of sustainable mobility in urban areas.

The steering committee, composed of international experts in the field of mobility, has identified five priority issues:

- To integrate Mobility within the sustainable development policies adopted by urban and inter-urban structures
- To identify the necessary challenging issues relating to the current decision-making process, to financing, to the objectives of the North/South cooperation and to the "carbon economy"
- To measure the effects and opportunities of sustainable mobility policies: What can be learned from current practices? Which research programmes should be initiated? What type of new cooperation should be encouraged? Which financing tools should be used?
- To raise the issue of coordination between the decision-making bodies: the position taken by local authorities in the definition and implementation of mobility policies, the tools necessary for national and international coordination, and the position taken by social influential organisations and by citizens
- To measure the impact of sustainable mobility policies on the environment, on individual and social behaviour and on the economy.

A three day Forum between researchers, economists, sociologists, urban planners, various economic players and local elected representatives.

**For further details:**

Annie-Claude THIOLAT  
E-mail: [ac.thiolat@congres-nantes.fr](mailto:ac.thiolat@congres-nantes.fr)

**URBAN AFFAIRS ASSOCIATION, 38TH ANNUAL MEETING**

23-26 April 2008 Baltimore, Maryland, USA

**For further details:**

Urban Affairs Association  
University of Delaware  
298 Graham Hall  
USA

Tel: +1 302-831-1681  
Fax: +1 302-831-4225  
E-mail: [uaa@udel.edu](mailto:uaa@udel.edu) (general inquiries)  
E-mail: [uaa-conf@udel.edu](mailto:uaa-conf@udel.edu) (conference-related questions / concerns)  
[www.udel.edu/uaa/](http://www.udel.edu/uaa/)

**A SUBURBAN WORLD?  
GLOBAL DECENTRALISATION AND THE NEW METROPOLIS**

6-8 July 2008, Reston, Virginia, USA

We have entered a new era where the areas outside core cities are forming different settlement systems. As urban form changes, new research and policy have to be crafted to meet the challenges of sprawl, congestion and affordable housing. This conference will take a look at the new metropolis in the context of global decentralization.

Tracks:

- Immigration/Changing Demographics of the Suburbs
- Special Segregation by Lifestyle/Economics; Gated Communities
- Megapolitans/Metropolitan Form
- Transportation
- Suburbs and Sustainability: Exurban Development in an Era of Limited Energy Resources
- Disasters/Adaptation
- Transnational Communities/Residential Tourism
- Governance and Regulation
- Business of Suburbia/Economic Development/Economic Space
- Suburban Decline
- Urban Form at the Neighborhood Level
- Newburbia/Newtowns
- History

**For further details:**

Katrin Anacker  
Post Doctoral Fellow  
Metropolitan Institute of Virginia Tech  
E-mail: [asuburbanworld@vt.edu](mailto:asuburbanworld@vt.edu)  
[www.mi.vt.edu](http://www.mi.vt.edu)

**ACSP-AESOP 4th JOINT CONGRESS 'BRIDGING THE DIVIDE: CELEBRATING THE CITY**

6-11 July 2008, Chicago, USA

Following three successful ACSP-AESOP Joint Congresses in Oxford (1991), Toronto (1996) and Leuven (2003) the Association of Collegiate Schools of Planning (ACSP) and the Association of European Schools of Planning (AESOP) will hold their 2008 annual conferences together at the fourth Joint Congress in Chicago. We extend an invitation to colleagues from North America, Europe and beyond to join us in what will be a major gathering of planning scholars.

The conference theme "Bridging the Divide: Celebrating the City" focuses on the mediating role of cities in conflicts between racial and ethnic groups.

More information on ACSP:  
<http://acsp.org>  
More information on AESOP:  
<http://www.aesop-planning.com>

The conference hotel is located in the heart of downtown Chicago, with tourist and shopping attractions nearby. Chicago is home of the well-known 1909 Chicago Plan by Burnham and Bennett, the 1893 World's Columbian Exposition, important 20th century architecture, a dramatic mayor-led city greening program, the acclaimed Millennium Park, the American Planning Association, the Congress for New Urbanism, summer festivals and diverse neighbourhoods. In many ways the city has reinvented itself in recent years and is now a major tourist destination. The contrast between a downtown sky-line, to match any in the world, with the vast Lake Michigan is a startling urban experience as well as being a stunning example of fine city planning and adventurous urban design.

The University of Illinois at Chicago (UIC) is a large, public, comprehensive research university with 25,000 students located on the edge of Chicago's vibrant downtown – the famous Loop. It has an explicit "Great Cities Commitment" which is led by the College of Urban Planning and Public Affairs (CUPPA). The College offers masters and Ph.D. degrees in both urban planning and policy and public administration, and has seven urban research centers.

The Urban Planning and Policy Program is the largest graduate planning program in the U.S. with over 200 students and a distinguished faculty. The faculty is heavily engaged in research and policy advice work in the city, enabling the conference to take full advantage of the strengths of the Program.

More information: <http://www.uic.edu/cuppa>

Joint Congress Committee:

Peter Ache, Helsinki University of Technology  
Robin Boyle, Wayne State University  
Simin Davoudi, Newcastle University (co-chair)  
Michael Hibbard, University of Oregon  
Karel Meier, Czech Technical University of Prague  
Curt Winkle, University of Illinois at Chicago (co-chair)

Local Host Committee:

Urban Planning and Policy Program  
College of Urban Planning and Public Affairs  
University of Illinois at Chicago  
Robin Hambleton and Curt Winkle, co-chairs

**EURA CONFERENCE DRAFT PROPOSAL:  
'LEARNING CITIES IN A KNOWLEDGE-BASED  
GLOBAL SOCIETY'**

25-28 September 2008

**EURA EVENT**

Further information on the draft proposal for this conference can be found on page 16.

Conference organiser:

Prof Alessandro Balducci  
Politecnio di Milano, Italy  
E-mail: [Sandro.Balducci@polimi.it](mailto:Sandro.Balducci@polimi.it)

## Past conferences

**THE SPIRIT OF SEVILLA – EUROPEAN LOCAL  
GOVERNMENTS COMMIT TO ADVANCE  
IMPLEMENTATION OF SUSTAINABLE  
DEVELOPMENT POLICIES**

21-23 March 2007, Sevilla, Spain

Over 1500 delegates from European local governments have committed to act immediately and implement advanced policies for local sustainable development.

“The Spirit of Sevilla” is the culmination of the Fifth European Conference on Sustainable Cities and Towns and endorses the Aalborg Commitments.

This event represents a major milestone in the pursuit of a sustainable Europe, with strong attendance and vigorous debate highlighting the importance of sustainable development for local politicians in Europe. The commitment of delegates to immediately advance implementation of the Aalborg Commitments is an important step towards a sustainable Europe.

Sevilla 2007 aimed to inspire local governments by providing examples of successful implementation of the Aalborg Commitments. Keynote speakers included Cristina Narbona Ruíz, the Spanish Minister of the Environment; Mayor of Sevilla, Alfredo Sánchez Monteseirín; and Dennis Meadows, Honorary Member of the Club of Rome.

In Sevilla, local governments have committed to adapt policies and actions to meet sustainability challenges. Local governments will assess progress to achieve their targets by setting indicators, undertaking regular monitoring reviews and make results available to citizens.

Across Europe, cities and towns will take the Aalborg Commitments to the streets by engaging with their citizens and stakeholders to ensure progress in local sustainability. Their work will inspire and motivate other cities and local authorities to enter into the Aalborg Commitment process.

“The Spirit of Sevilla” calls for local governments to sign up to the Aalborg Commitments and join this common process. The challenge for Europe is clear, and from today, there is a stronger mandate to implement sustainable development through the Aalborg Commitments.

Background information

From 21-24 March 2007, over 1500 representatives from local governments in Europe gathered in the dynamic city of Sevilla, Spain, for the Fifth European Conference on Sustainable Cities & Towns. The conference was co-organised by the City of Sevilla and ICLEI - Local Governments for Sustainability, on behalf of the European Sustainable Cities & Towns Campaign. The European Sustainable Cities & Towns Campaign supports local governments in their work for local sustainability.

Sevilla 2007 built upon previous conferences, notably the Aalborg +10 Conference of 2004 which resulted in the Aalborg Commitments. The Aalborg Commitments are a set of policy commitments that have been recognised by the European Council in the new European Sustainable Development Strategy as the focus of local sustainability. “The Spirit of Sevilla” reaffirms the Aalborg Commitments and promotes advanced implementation of local sustainable development strategies in order to achieve local sustainability in Europe.

**For further details:**

Sevilla 2007 – the Fifth European Conference on Sustainable Cities & Towns

[www.sevilla2007.org](http://www.sevilla2007.org)

European Sustainable Cities & Towns Campaign

[www.sustainable-cities.org](http://www.sustainable-cities.org)

Tel: +49 761 368 9220

E-mail: [sevilla2007@iclei-europe.org](mailto:sevilla2007@iclei-europe.org)

## Recent Publications

This section provides news and information about recent publications by members. If you have any material you would like to see in the next issue please forward to [laurence.carmichael@uwe.ac.uk](mailto:laurence.carmichael@uwe.ac.uk)

G. Richards and J. Wilson (eds) (2007)

### **TOURISM, CREATIVITY AND DEVELOPMENT**

Series: Contemporary Geographies of Leisure, Tourism and Mobility

ISBN: 9780415427562; ISBN-10: 0415427568

Publisher: Routledge; Publication Date: 11/12/2007

List Price: £80.00 (hardback, possible paperback version in future)

Now available for Pre-order from <http://www.routledge.com>

This book analyzes, in critical terms, the impact and effectiveness of creative strategies and charts the emergence of 'creative tourism'. A wide range of examples from Europe, North America, Asia, Australia and Africa explore the interface between tourism and creativity including: creative spaces and places such as cultural and creative clusters and ethnic precincts, the role of the creative industries and entrepreneurs in the creation of experiences, creativity and rural areas, the 'creative class' and tourism, lifestyle, creativity and tourism and marketing creative tourism destinations. The diverse multidisciplinary contributions link theory and practice, and demonstrate the strengths and weaknesses of creativity as a tourism development strategy and marketing tool, the relationship between individual and collective forms of creativity and the widely differing forms of modern tourism.

#### **Contact:**

Julie Wilson

Universitat Autònoma de Barcelona/University of the West of England

E-mail: [Julie.wilson@uwe.ac.uk](mailto:Julie.wilson@uwe.ac.uk)

---

Barnes, M., Newman, J. and Sullivan, H. (2007)

### **POWER, PARTICIPATION AND POLITICAL RENEWAL: CASE STUDIES IN PUBLIC PARTICIPATION**

Public participation is central to a wide range of current public policies – not only in the UK, but elsewhere in the developed and the developing world. There are substantial aspirations for what enhanced participation can achieve. This book offers a critical examination of both the discourse and practice of participation in order to understand the significance of this explosion in participatory forums, and the extent to which such practices represent a fundamental change in governance.

Based on 17 case studies across a range of policy areas in two English cities, the authors address key issues such as: the way in which notions of the public are constructed; the motivation of participants; how the interests and identities of officials and citizens are negotiated within forums; and the ways in which institutions enable and constrain the development of participation initiatives.

Much of the literature on public participation is highly

normative. This book draws from detailed empirical work, theories of governance, of deliberative democracy and social movements to offer a nuanced account of the dynamics of participation and to suggest why experiences of this can be frustrating as well as transformative.

ISBN 978 1 86134 667 4 (pb) £24.99

ISBN 978 1 86134 668 1 (hb) £65.00

#### **Contact:**

Professor Helen Sullivan

University of the West of England

E-mail: [Helen.sullivan@uwe.ac.uk](mailto:Helen.sullivan@uwe.ac.uk)

---

Sullivan, H. (2007)

### **INTERPRETING COMMUNITY LEADERSHIP IN ENGLISH LOCAL GOVERNMENT,**

Policy and Politics, 35(1) pp141-162

#### **Contact:**

Professor Helen Sullivan

University of the West of England

E-mail: [Helen.sullivan@uwe.ac.uk](mailto:Helen.sullivan@uwe.ac.uk)

---

Hamel, P. et Jouve, B. (Septembre 2006)

### **UN MODÈLE QUÉBÉCOIS ? GOUVERNANCE ET PARTICIPATION DANS LA GESTION PUBLIQUE**

publié aux Presses de l'Université de Montréal,

ISBN 2-7606-2024-7, 144 pages • 19,95 \$

Au Québec, la participation des usagers et des citoyens à la gestion publique constitue une composante essentielle de l'État et des formes de gouvernance qui caractérisent son action. Il faut remonter aux années 1960 et à la « Révolution tranquille » pour en saisir toute la signification par rapport à la modernisation de l'État. Toutefois, au cours des dernières années, les choses ont changé. Le « modèle québécois » des années 1970, ayant pour base la construction de l'État providence, n'a plus rien à voir avec celui des années 1990, soutenu par les valeurs néo-libérales et pratiquant le désengagement public. L'un des objectifs de cet ouvrage est de retracer l'évolution des formes institutionnelles de la participation des usagers/citoyens dans les secteurs de la santé et de l'éducation au Québec. En mettant en lumière les nombreux registres à partir desquels les usagers et citoyens contribuent à la gestion des services en éducation et en santé, ce livre démontre que l'avenir des systèmes de santé et d'éducation au Québec dépend d'une manière grandissante du rôle des acteurs issus de la société civile.

#### **For further details**

<http://www.pum.umontreal.ca/ca/fiches/2-7606-2024-7.html>

## Urban Research News and Information

This section provides news and information about research activities in Europe and elsewhere. If you have any material you would like to see in the next issue please forward it to [Laurence.Carmichael@uwe.ac.uk](mailto:Laurence.Carmichael@uwe.ac.uk)

### THE DEMOCRATIC ANCHORAGE OF GOVERNANCE NETWORKS IN THREE EUROPEAN COUNTRIES

What is the relationship between governance networks and democracy? Does the development and delivery of public policy through networks of state, private and civil society actors enhance democracy through greater inclusiveness? Or are decisions located away from elected politicians, into arenas that lack transparency and accountability, thus undermining democracy? An ESRC funded project (2006-2008) aims to find answers to some of these questions. The project is led by a Prof Chris Skelcher (School of Public Policy, University of Birmingham) and Prof. Helen Sullivan (Cities Research Centre, University of the West of England) working with Dr Michael Farrelly (Birmingham) and Stephen Jeffares (UWE). It involves collaboration with Prof Erik-Hans Klijn (Centre for Public Management, Erasmus University, the Netherlands) and Prof. Eva Sørensen (Centre for Democratic Network Governance, Roskilde University, Denmark).

There has been significant change in the relationship between democratic institutions and the public policy process throughout Europe:

1. Conventional democratic oversight is problematic because elected politicians are seldom members of partnership boards.
2. Governance networks are loosely coupled to representative democratic institutions due to their informal and flexible structure and decision-process.
3. Participative and deliberative forms of democracy occur, but often around the margins of the core decision arenas.

The democratic implications of these emerging configurations and practices are not well understood. Additionally research has concentrated on specific policy fields (e.g. early years provision, regeneration) rather than the contemporary democratic governance of a whole community or city. Consequently advice and guidance to policy-makers and practitioners relies on a partial evidence-base.

This ESRC funded project undertakes a comparative quantitative and qualitative investigation of the 'democratic anchorage' of governance networks. The overall aim is:

To assess and explain the democratic anchorage of governance networks through comparative analysis, and to identify normative principles and approaches that can strengthen their institutional design and resultant democratic practices.

We use the term 'democratic anchorage', rather than 'democratic deficit', because it allows the possibility that non-representative forms of democracy are present.

The project builds on existing research strengths of the applicants, and their close research relationship with colleagues in Denmark and the Netherlands. The project is examining the democratic anchorage of governance networks in three cities, one each in the Netherlands, England and Denmark. It focuses on integration and neighbourhood regeneration networks, but in addition sets these in the context of the overall democratic governance of that city.

The empirical focus of the research are the new institutions emerging as a result of the desire to join-up government, and to increase the involvement of business, citizens and non-profit organisations in public policy formulation, decision, and implementation. Informal associations, partnerships, public interest companies and other types of organisation play a key role in shaping, deciding and delivering public policy. This study investigates the extent to which these new arenas are connected to democratic structures and processes at sub-national level and establishes design principles to enable citizens and stakeholders to engage with these new forms of policymaking and implementation.

It draws on institutional, ideational, network and democratic theory to investigate four problems: the marginality of elected politicians in governance networks; tensions in governance network design between different democratic traditions; the resolution of collective action problems in polycentric governance networks; how processes of policy deliberation are affected by governance network design. An innovative aspect of the research project is its use of 'Q' method an interpretative method with a quantitative stage (factor analysis), which we are employing to generate data on democratic discourses, providing a context for subsequent data collection and interpretation.

The project will assist policy makers, public service managers, and citizens to develop the democratic aspects of their approaches to collaborative decision-making and service delivery. The project will work with citizens, managers, and politicians in each locality to test these ideas, and will encourage learning between the research sites across Europe. The project will build links with other researchers working on these issues, in order to strengthen both the relevance for policy and practice, and the academic strength of the study.

#### For further details:

Professor Chris Skelcher  
University of Birmingham  
Tel: +44 (0)121 414 4962  
E-mail: [c.k.skelcher@bham.ac.uk](mailto:c.k.skelcher@bham.ac.uk)

Professor Helen Sullivan  
University of the West of England  
E-mail: [Helen.sullivan@uwe.ac.uk](mailto:Helen.sullivan@uwe.ac.uk)  
<http://www.inlogov.bham.ac.uk/research/esrcdemoc.htm>

## CRIME IN HIGH-RISE HOUSING – IS IT THE BUILT ENVIRONMENT'S FAULT?

Henry Shaftoe, Cities Research Centre, University of the West of England

Commencing in the 1960s, there was a dramatic increase in the rate of construction of high rise dwellings throughout Europe. This was mostly a response to the need to build a large amount of accommodation after the destruction of the Second World War. However, the particular style of dwelling type (tower blocks and deck or corridor access buildings) was based on the modernist principles of architecture that arose from the "Bauhaus" movement in Germany and the ideas of the Swiss architect Le Corbusier.



Berlin



Birmingham

Although this mass, system-built, production of housing managed to provide a large quantity of housing, there have been problems in some countries with the quality of life within them. These problems have not been universal throughout Europe, but particularly in France and the United Kingdom, many of these blocks have been vulnerable to crime. The question is whether this problem of crime has something to do with the design and construction of such blocks, or whether it is to do with broader social and demographic factors.

With funding from the European Union's "AGIS" programme and co-ordinated by the Max Planck Institute in Freiburg, Germany, a cross-national team of researchers used a "carousel" approach to compare and contrast the fortunes of six high rise housing estates in five European States. The case study areas were located in Berlin [2], Bristol, Amsterdam, Krakow and Budapest. They made for excellent illustrations of many of the themes being debated in the field of crime prevention, social policy and environmental design. As well as assessment visits to all the sites by the entire team, the evaluation consisted of: analysis of recorded crime data, interviews with key local staff (eg: housing managers, police, community development workers) and a household survey using the same format across all the sites.



Anonymous security monitoring at Hartcliffe

contrasts with friendly concierge in Marzahn high rise block.



The Bristol estate (Hartcliffe) appears to have the highest crime rate of any of the case study estates and yet has had the most physical security and design improvements explicitly aimed at crime reduction. These consist of direct fortification measures, such as new security doors, through electronic measures, most notably CCTV, to design measures such as new perimeter fencing.

The most successful estate (and certainly the one that has been transformed most radically) appears to be Marzahn in Berlin, where a holistic approach has been taken, aimed at overall quality of life improvement rather than specifically a crime reduction one. Although Marzahn has some good security practice such as a concierge scheme, with linked CCTV in one of the biggest high-rise blocks (see photo opposite), it also has some design features, (such as ground floor balconies adjacent to luxuriant foliage) that, from a Crime Prevention Through Environmental Design (CPTED) point-of-view, are distinctly dubious. The same applies to Gropius-stadt in Berlin, where access doors to low-rise apartments and garages often offer poor natural surveillance opportunities and would be distinctly risky in higher crime areas (such as Hartcliffe in Bristol!):



Ground floor apartments have no "buffer" from public to private space.

Little natural surveillance of garages. (Gropiusstadt)



Bijlmeester (Amsterdam) has had a huge amount of redesign work aimed at making the estate safer (including demolition, remodelling and improved security measures), yet still appears to have problematic public space layouts and potential entrapment spots:



Ill-defined public spaces around existing and new housing -Bijlmeester, Amsterdam



The other two former soviet housing estates in this study (apart from Marzahn, which was in the former East Berlin) - in Krakow and Budapest have had very little done to them and are in a relatively mediocre physical condition (particularly relative to the two Berlin estates), yet they appear to be faring relatively well in terms of low crime levels.

However, the concern is that unless substantial improvements are made to the built environment on these Polish and Hungarian estates, the inevitable socio-economic polarisation driven by free market forces will exert an increasingly strong influence, with the result that, over the next ten or twenty years they could become "places of last resort" in the same way that British council estates have done. The prevention of such a downward spiral appears to have been the rationale behind the Berlin administration's heavy investment in the comprehensive improvement of Marzahn and Gropiusstadt.



Poor natural surveillance and defensible space designs at Bekasmegeyer.



The overarching conclusion from the research team's assessment of the case study areas is that, indeed, physical security and design improvements aimed at crime reduction alone, will not in themselves guarantee a safer built environment. Community safety is reliant much more on socio-economic, community cohesion, demographic and estate management factors, although good design and appropriate levels of fortification can provide the backdrop to a better quality of life for residents of high-rise estates.

Further details of the project and its findings can be obtained from the co-ordinator:

Tim Lukas at the Max Planck Institute for Foreign and International Criminal Law  
Department of Criminology  
Gunterstalstrasse73  
79100, Freiburg  
Germany

## 'URBAN SPRAWL IN EUROPE – THE IGNORED CHALLENGE'

The urban sprawl that characterises many European cities and regions is unsustainable, and integrated planning at EU, national, regional and local levels is urgently needed to resolve issues that are contributing to climate change, causing social divisions in cities, and threatening the very economic vitality of Europe that drives sprawl forward.

These are some of the observations highlighted in a report 'Urban Sprawl in Europe – the Ignored Challenge' funded by the European Environment Agency and led by the University of West of England planning expert David Ludlow.

The report provides a vivid description of the impacts of that urban sprawl has had, and is having on cities all over Europe. The report highlights how sprawl occurs when cities grow without planning controls, and details the ways in which the failures of planning in old Europe are spreading eastwards to the new member states fuelled by European development funding that is intended to place all regions of Europe on an equal footing.

David explains, "Urban sprawl is driven by the mega trends of social and economic change that create the new hyper-mobility that is evident across Europe today. This mobility makes possible the social aspirations for new housing in the countryside with all the benefits of a rural location whilst meeting the economic need to be in the city.

"But urban sprawl is unsustainable as mobility across the city-regions is creating a pattern of dispersed homes and workplaces that can no longer be viably served by public transport. Rising costs and inefficiencies of public transport create a vicious circle in which more and more we now turn to the car. Congestion on the roads strangles the economy and the model of the living in the 21st century becomes unviable.

"Burgeoning transport growth push the emissions of greenhouse gases ever higher and with it prime cause of a climate change. Urbanisation destroys natural environments, threatens biodiversity, and in the city traps many in under-privilege and poor housing conditions. The combined social, environmental and economic costs of sprawl add up to an enormous price to pay for individual freedom and the desire for mobility.

"Not only in the UK but throughout Europe sprawl is at work. It is active in the city-regions, along the new motorways of integrated Europe, and throughout the Mediterranean coasts. In south east Spain's sprawl threatens the coastal ecosystems and the demand for drinking water threatens constant drought.

"The new mobility is also apparent across Europe as mass tourism is attracted to the newly accessible historic cities of the former east. House prices in Tallinn, Estonia have spiralled out of control as investors capitalize on the new

tourist boom. The “nouveau rich” build dachas in the countryside with little or no control by the public authorities.

“Lessons can be learned from the experience of the cities and regions of Europe. Lessons that show that integrated planning for the growth of cities must be supported, and based on assessments that clearly demonstrate the full social, environmental and economic cost of sprawl, and which provide the foundations for sustainable spatial planning delivered by authorities at all levels from local to the EU.”

The report calls for the urgent definition of a pan-European planning policy to combat sprawl. David concludes “The EU can take a lead role in developing the necessary visions to support local frameworks for action, but control of sprawl also depends on an integrated and coherent policy action at all levels of government. We hope that the report will contribute to raising further awareness of the critical problems that arise from urban sprawl.”

**For further details:**

David Ludlow  
Faculty of the Built Environment  
University of the West of England  
E-mail: david.ludlow@uwe.ac.uk

**UNIVERSITY OF THE WEST OF ENGLAND  
EXPERTS INVESTIGATE MARKETS FOR  
SATELLITE INFORMATION**

Environmental experts from the University of the West of England are collaborating to forecast future public sector markets for information and intelligence provided by satellites.

David Ludlow from UWE is working in partnership with Infoterra UK and pan-European partners in the BOSS4GMES (Building Operational and Sustainable Services for GMES) project to support the implementation of Global Monitoring for Environment and Security (GMES). GMES is a partnership between the EU Commission and the European Space Agency convened to develop the linkages between earth observation information and the information needed by a wide range of public agencies so that maximum benefits are derived from this intelligence.

BOSS4GMES (Building Operational and Sustainable Services for GMES) is a FP6 Integrated Project looking into sustainability for the GMES process. It is focusing on three main pillars: (1) technology - to improve the efficiency of services, (2) business - to provide contractual, organisational and economic frameworks and (3) communications - to increase awareness about GMES.

By establishing an operational foundation for GMES, the coordination of environmental monitoring and exchange of information will be significantly improved. The consortium brings together the skills and know-how of teams engaged

in developing GMES services - Operational oceanography, Land monitoring, Response to crisis and emergencies. New services will also be further developed - atmosphere and air quality, security. Over thirty months, the BOSS4GMES consortium members will provide European bodies and agencies, Member States and regional/local authorities, as well as public and private users, with decision support tools and processes concerning the environment and security. Recommendations and implementation plans will be defined to prepare the next steps of GMES deployment.

The co-funding contract between the European Commission (11.84 M in financing) and the BOSS4GMES consortium (8.38 M in investment) came into force on December 1st 2006. The thirty seven consortium members held the project kick-off meeting in Brussels on December 13th-14th 2006.

**For further details:**

David Ludlow  
Faculty of the Built Environment  
University of the West of England  
E-mail: david.ludlow@uwe.ac.uk

**STRATEGIC ENVIRONMENTAL ASSESSMENT IN  
THE EU**

The Environmental Assessment of Plans and Programmes Directive (‘The SEA Directive’ 2001/42/EC) has been heralded as an important tool for Environmental Policy Integration as it requires systematic assessment of environmental impacts coupled with a transparent and participatory approach to decision making procedures. SEA provides a mechanism to support a number of themes emerging from the European level in recent years, including the EUs Sustainable Development Strategy (Gothenburg, 2001) and the Directive on Public Participation (2003/35/EC). SEA could therefore serve an important role in aiding realisation of sustainability objectives at a global, European, national and local level. However, the SEA Directive also poses a number of challenges for implementation due to the multi sectoral nature of governance, characterisation of complex impacts, trade offs between impacts and evaluation of a range of alternatives. Competing interests between stakeholder groups is also likely to lead to conflicts and tensions in the decision making process. The key question to ask is, can SEA promote innovation in environmental policy integration or will it just be regarded as yet another procedural necessity to be incorporated into the traditional governance structures and planning procedures of Member States?

A Sixth Framework Funded Programme ‘Governance for Sustainability’ seeks to provide further clarification on this issue by asking ‘How do the concrete institutional and practical enactment of certain governance modes impact upon the effectiveness and legitimacy of policies aimed at sustainability objectives by using and generating different types of knowledge?’ Member States have been afforded

wide discretion in terms of the domestic measures used to implement the SEA Directive, including the range plans and programmes to which SEA should be applied, alternatives to be considered and particulars of the consultation process. Early indications reveal that this is giving rise to uneven interpretation and subsequent national implementation measures as was experienced with the EIA Directive (85/337/EEC as amended 97/11/EC). The terminology used in the SEA Directive to identify 'reasonable alternatives', 'significant environmental effects' and interpretation of the term 'public' leaves wide scope for governance modes to generate or filter different forms of knowledge in the decision making process.

### Alternatives

The necessity to review a range of 'reasonable alternatives' has been one of the most problematic in terms of consistency across Member States, with some countries ignoring this requirement all together. It is necessary to enable a degree of flexibility to reflect the broad nature of plans and programmes, yet in many instances this seems to be regarded as little more than a procedural necessity limited to a vague or unlikely set of options, used to confer political legitimacy. Further problems are encountered when SEA is being applied to modified plans and programmes or where the policy making process is already under way. In the case of one transport plan, the practical need to secure delivery mechanisms for selected alternatives via private investment prior to the SEA / consultation also raises questions over legitimacy. This highlights some of the areas in which the provisions of the Directive may need to be strengthened and also some of the difficulties encountered in transposing a legal mechanism into an achievable framework.

### Significance

Initial findings from the case studies do suggest that SEA offers a tool for more systematic evaluation of environmental impacts that can improve the comprehensiveness of the plan making process. Determining the 'significance' of impacts that effectively integrates the views of different actors however poses a difficult and complex challenge. Traditionally environmental assessment has relied on technical and codified forms of knowledge, and judgments of significance have relied on expert or professional knowledge. Assimilating information on qualitative impacts, societal perceptions and more implicit forms of knowledge poses more difficulties. The weighting afforded to different interest groups will be influenced by procedural / institutional arrangements, political forces, formal and informal rule systems and participatory engagement techniques. The assessment process is likely to encounter conflicts both between and within knowledge forms and selective use of knowledge to support strategic priorities. Thus the relationship between governance modes and the utilisation / transfer of knowledge will form the basis of further research.

### Participation

The findings to date illustrate that in some cases SEA has sought to invite a range of representations / responses at an early stages in the decision making process (e.g. alternative and scoping stage), whilst in other cases SEA appears to have occurred in a more retrospective manner, involving mainly experts and planners, aimed at ensuring compliance with legislative procedures. A key strength of SEA in most cases appears to be greater provision of information through reporting procedures, thereby enhancing transparency. There is also a tendency to focus on written modes of communication or public forums, where participants act in a scrutinising capacity over a pre-formulated strategy. This approach to 'consultation' rather than 'participation' may inhibit the potential for innovation and learning in the policy making process. In Greece and Hungary it has also been highlighted that the timings allocated to consultation activities may affect the capacity for effective public engagement.

### Summary

This long awaited Directive has incorporated new provisions for scoping, reporting, quality control and monitoring which should help to strengthen the plan and programme making process. The SEA Directive may also improve procedures for horizontal and vertical integration via statutory requirements for tests of consistency with other policies, plans and programmes. In some sectors SEA has been viewed as a costly and time consuming process that serves only as a compulsory 'add on' to existing arrangements however early indications show that SEA may be being viewed in a more positive light due to the potential to test and improve the plan and the opportunity to promote wider public acceptability. While SEA has led to improvements in the comprehensiveness and transparency of policy making in some areas, the test will remain whether both the provisions of the Directive and adopted legal instruments of Member States can facilitate objectives implicit in the 'spirit' of the Directive or whether it will just be regarded as another tool to support 'business as usual'.

For further details:

Kara Davies  
Faculty of the Built Environment  
University of the West of England  
E-mail: [Kara.Davies@uwe.ac.uk](mailto:Kara.Davies@uwe.ac.uk)

## Write about your research

We welcome news of your research for inclusion in the next EURA newsletter.

Please e-mail your information to

[Laurence.Carmichael@uwe.ac.uk](mailto:Laurence.Carmichael@uwe.ac.uk)

## EURA Developments

### New EURA Journal: Urban Research and Practice

#### Routledge launches Urban Research & Practice

Routledge Journals and the European Urban Research Association (EURA) are proud to announce the launch of their new journal Urban Research & Practice for 2008.

Urban Research & Practice will provide a systematic description of urban issues, urban developments and urban policy and implementation. It will seek to explain variations in urban policies or urban governance and will analyse and evaluate the effects of these policies and processes. It will also look at the European-wide factors that impact on urban areas, urban policies and urban governance.

The journal will seek to bridge the intellectual and geographical 'divides' that currently exist in the field of urban affairs. As well as traditional academic papers, the journal will include a policy section, a project report section and book reviews.

Urban Research & Practice will appear three times a year in both print and online formats. It is under the editorial direction of Professor Rob Atkinson, University of the West of England. His fellow editors are Dr Ivan Tosics, Hungary; Dr Jan Erling Klausen, Norway and Dr Cristiana Rossignolo, Italy.

Professor Rob Atkinson, Editor of Urban Research & Practice, said: 'The launch of Urban Research and Practice represents an important step forward in the development of EURA. It is a key part of our commitment to bring together scholars and practitioners from across Europe and beyond to focus on urban issues. We see this as an opportunity not only to disseminate knowledge based on high quality research but also to inform and engage with the important policy debates that are affecting cities in Europe and across the world'.

Rod Cookson, Urban Studies publisher at Routledge added: 'We are delighted to be partnering with EURA in this new venture. Urban Research & Practice will provide a significant new outlet for quality research in a rapidly-expanding field, and will help policymakers develop deeper, richer engagement with the urban challenges that face Europe in coming decades.'

For information on how to submit an article to Urban Research & Practice, please visit <http://www.tandf.co.uk/journals/rurp>.

#### About the European Urban Research Association

The aims of the Association are to provide a forum for people from different disciplines and policy backgrounds to exchange information on their research; to encourage interdisciplinary and cross-national approaches to research; to bridge the gap between academic, professional and policy interests; to inform public debate and improve the quality of urban policy. Membership is open to individual researchers, research students, research institutions active in the field of urban research and institutions, agencies and associations of practitioners active in the field of urban affairs.

#### About Routledge Journals

Routledge Journals is part of Taylor & Francis, an Informa business, and is one of the world's leading publishers of academic journals. Taylor & Francis is dedicated to the dissemination of scholarly information, drawing on expertise developed since first publishing learned journals in 1798. Taylor & Francis now publishes 1,250 scholarly journals in association with 340 learned societies and scholarly institutions. The Company operates from a network of 20 global offices, including Philadelphia, Oxford, Melbourne, Stockholm, Beijing, New Delhi and Singapore.

#### Contacts:

Customer Services: Sarah Wright, +44 (0) 207 017 6148;

e-mail: [sarah.wright@tandf.co.uk](mailto:sarah.wright@tandf.co.uk)

Publishing: Ginny Smith, +44 (0) 207 017 6398;

e-mail: [ginny.smith@tandf.co.uk](mailto:ginny.smith@tandf.co.uk)

## English Historic Towns Network (EHTF)

In each issue we feature a network. On this page we look at EHTF  
(<http://www.ehtf.org.uk>)

The English Historic Towns Forum (EHTF) has been supporting professionals working in the historic built environment since 1987. The Forum's events and publications focus on perennial and topical issues. This collective then offers a strong platform from which to lobby policy makers on behalf of historic towns and cities.



EHTF celebrates its 20th birthday at Cityscape, Earl's Court, London, 28 February 2007 ([www.cityscapeonline.org](http://www.cityscapeonline.org)) (left-right: Sarah Kershaw, Chris Winter, Dawn West and Brian Human)

EHTF was founded to establish and encourage contact between local authorities having responsibility for the management for historic towns and cities, and between these authorities and other public, private and voluntary sector agencies:

- By organising conferences and seminars
- Through its network of expert practitioners and advisors, through partnership links with Government and non-government organisations, policy makers and private sector companies working in historic towns and cities
- By researching and producing good practice guidance
- By influencing key policy making bodies which keeps Members' and Partners' concerns at the forefront of national agendas
- Through European links including, the European Association of Historic Towns & Regions. We feature on the EAHTR website: [www.historic-towns.org](http://www.historic-towns.org)

EHTF is funded from three sources:

- Membership fees
- Sponsorship
  - Corporate Partnerships: The Forum has a special relationship with selected private sector companies,

each representing a particular area of interest.

These companies enjoy unique benefits and a high profile within the Forum.

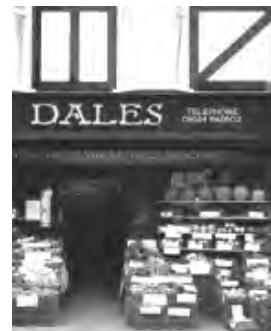
- Support for publications and events, as and when appropriate

- Publication sales and events fees

The Executive Committee, elected by the AGM, meets four times a year to discuss issues, agree work programmes and make policy decisions. EHTF is administered by two full-time and two part-time members of staff, based in the Faculty of the Built Environment of the University of the West of England, Bristol. The Forum holds a strategy meeting approximately bi-annually, bringing members of the Forum together, to discuss policy and strategy issues.

### An example of hot topic covered by EHTF:

There are many things about our historic towns and cities that make them examples of sustainability.



Planning has played a positive part in creating the quality of life offered in historic towns.

But what of the future?

The challenges of the present system and the turbulence around further change run the risk of undermining planning by

demotivating planners and damaging public confidence in the benefits it brings. For further details, look at our March 2007 newsletter on [www.ehtf.org.uk](http://www.ehtf.org.uk).

### For further details:

Chris Winter, Director  
English Historic Towns Forum  
PO Box 22  
Bristol BS16 1RZ

# 10th Anniversary EURA Conference 'The Vital City'

12th-14th September 2007, Glasgow ([www.eura2007.org.uk](http://www.eura2007.org.uk))

This is a major conference on the theme of The Vital City being organised on behalf of the European Urban Research Association (EURA) by the Department of Urban Studies, University of Glasgow.

EURA brings together an inter-disciplinary network of urban researchers from across Europe and beyond. It provides a forum for cross-national debate on urban policy and acts as a bridge between research and policy in this rapidly urbanising world. The conference will celebrate its 10th Anniversary and be an opportunity for urban researchers and policy makers to engage in lively debate and exchange knowledge and ideas about the challenges involved in achieving The Vital City in different European settings.

## Speakers include:

**Bea Campbell** Independent writer and commentator on cities and society.

**Greg Clark** City and regional development advisor, currently Chair of the OECD Forum of Cities and Regions and Advisor to the UK Government and Greater London Authority.

**Professor Sako Musterd** Professor of Social Geography, University of Amsterdam, The Netherlands.

**Professor Michael Storper** Professor of Economic Geography, London School of Economics; Professor of Economic Sociology, Institut d'Etudes Politiques de Paris; Professor of Regional and International Development, University of California, Los Angeles.

## Papers were invited which addressed issues or related questions around the following themes:

- Resurgent European Cities
- Diversity, Cohesion and the Richness of Cities
- Branding the Distinctive City
- The Urban Environment and 'Quality of Place'
- Labour Markets in the New Europe
- Neighbourhood Dynamics and Urban vitality
- Urban Governance
- Community Activism and Civic Innovation
- Health and Public Policy
- Real Estate Development and City Planning
- Housing Organisation and Finance
- Urban Form, Transport and Sustainability

## The European Urban Research Association Governing Board

**Dr Pawel Swianiewicz**  
(President)

University of Warsaw,  
Poland  
[pswian@uw.edu.pl](mailto:pswian@uw.edu.pl)

**Dr Dubravka Alibegovic**

The Institute of Economics, Zagreb,  
Croatia  
[djurlina@eizg.hr](mailto:djurlina@eizg.hr)

**Professor Rob Atkinson**

University of the West of England, UK  
[rob.atkinson@uwe.ac.uk](mailto:rob.atkinson@uwe.ac.uk)

**Professor Alessandro Balducci**

Politecnico di Milano, Italy  
[sandro.balducci@polimi.it](mailto:sandro.balducci@polimi.it)

**Ulas Bayraktar**

IEP-Paris/University of Mersin, Turkey  
[ulasbayraktar@yahoo.com](mailto:ulasbayraktar@yahoo.com)

**Dr Laurence Carmichael**

University of the West of England, UK  
[Laurence.carmichael@uwe.ac.uk](mailto:Laurence.carmichael@uwe.ac.uk)

**Professor Dr Jens Dangschat**

Technische Universität Wien, Austria  
[Jens.dangschat@tuwien.ac.at](mailto:Jens.dangschat@tuwien.ac.at)

**Professor Bas Denters**

University of Twente, The Netherlands  
[s.a.h.denters@bsk.utwente.nl](mailto:s.a.h.denters@bsk.utwente.nl)

**Professor Panos Getimis**

Panteion University, Athens,  
Greece  
[pget@panteion.gr](mailto:pget@panteion.gr)

**Professor Robin Hambleton**

University of Illinois at Chicago,  
USA  
[robinh@uic.edu](mailto:robinh@uic.edu)

**Professor Dr Hubert Heinelt**

Technische Universität,  
Darmstadt, Germany  
[heinelt@pg.tu-darmstadt.de](mailto:heinelt@pg.tu-darmstadt.de)

**Mervi Ilmonen**

Helsinki University of Technology,  
Finland  
[Mervi.ilmonen@hut.fi](mailto:Mervi.ilmonen@hut.fi)

**Associate Professor Folke Johansson**

Goteborg University, Sweden  
[Folke.iohansson@pol.gu.se](mailto:Folke.iohansson@pol.gu.se)

**Dr Jan Erling Klausen**

Norwegian Institute for Urban  
and Regional Research, Norway  
[jan.e.klausen@nibr.no](mailto:jan.e.klausen@nibr.no)

**Professor Christian Lefèvre**

LATTS-ENPC, France  
[lefevre@descartes.enpc.fr](mailto:lefevre@descartes.enpc.fr)

**Dr Jacob Norvig Larsen**

Danish Building and Urban  
Research, Denmark  
[jnl@sbi.dk](mailto:jnl@sbi.dk)

**Associate Professor Liliana Padovani**

Istituto Universitario di  
Architettura di Venezia, Italy  
[padovani@iuav.it](mailto:padovani@iuav.it)

**Anne Querrien**

Les Annales de la Recherche  
Urbaine, France  
[anne.querrien@equipement.gouv.fr](mailto:anne.querrien@equipement.gouv.fr)

**Dr Cristiana Rossignolo**

Politecnico di Torino, Italy  
[rossignolo@archi.polito.it](mailto:rossignolo@archi.polito.it)

**Dr Paula Russell**

University College Dublin,  
Republic of Ireland  
[paula.russell@ucd.ie](mailto:paula.russell@ucd.ie)

**Professor Inés Sánchez de Madariaga**

Universidad Politécnica de Madrid,  
Spain  
[imadariaga@incia.es](mailto:imadariaga@incia.es)

**Dr Ivan Tosics**

Metropolitan Research Institute,  
Hungary  
[tosics@mri.hu](mailto:tosics@mri.hu)

## EURA Conference (Draft proposal)

"Learning Cities in a Knowledge-based Global Society"  
25th-28th September 2008. Politecnico Di Milano, Italy

### First day (Thursday)

Afternoon – opening session with key lectures

### Second day (Friday)

All day parallel workshop sessions

### Third day (Saturday)

Morning – parallel workshop sessions

Noon – summary session, reports from workshops

Afternoon – coach tours of Milan urban region

### Fourth day (Sunday)

Morning – General Assembly of EURA, election of Board

Followed by the new board meeting

Afternoon, evening – departure of participants

### Launch of call for papers:

December 2007

### Submission of abstracts:

15th March 2008

(6 months before)

### Information on accepting papers:

15th June 2008

(4 months before)

### For registration and paying conference fee:

1st July 2008

(1½ months before)

### For cancelling registrations:

15th July 2008

### Registration Fees

Non-members:	300 Euros
EURA Members:	250 Euros
Non-members from Central -Eastern Europe:	175 Euros
EURA members from Central Eastern Europe	125 Euros
Research students:	125 Euros

Additional 50 euros charged after 1st July 2008.

### Call for paper and parallel sessions

Provisional themes:

1. planning > new emerging forms of planning (from strategic planning onwards...), new issues at stake for planners (urban and regional cultural policies, creativity and capacity of attraction, the treatment of differences, in an interplay among and diversity...), new forms of knowledge in use in planning processes.
2. economic development > exploration of the new fields of competition and economical specialisation for cities defined by a knowledge based economy.
3. governance > exploration of learning processes which institutions are compelled to face.
4. social issues > relationship among the logic of competitiveness in a knowledge based economy and the issue of social cohesion (where for example, the effects of diffusion of forms of free lance creative -as well as- precarious work are read in the light of processes of social frailty, social fragmentation, individualisation, mobility and continuous re-territorialisation ...)

### Conference organiser:

Professor Alessandro Balducci

Politecnico di Milano, Italy

E-mail: Sandro.Balducci@polimi.it

**EURA EVENT**

### Your views

We would welcome your views and reactions on any aspect of this newsletter. If you have any material for inclusion in the next issue the copy deadline is **1st September 2007**.

Please send your material to Laurence Carmichael

**Email: [Laurence.Carmichael@uwe.ac.uk](mailto:Laurence.Carmichael@uwe.ac.uk)**

For general enquiries about EURA contact our secretariat

**Email: [Julie.Triggle@uwe.ac.uk](mailto:Julie.Triggle@uwe.ac.uk)**

**Prof. Rob Atkinson**

**Email: [Rob.Atkinson@uwe.ac.uk](mailto:Rob.Atkinson@uwe.ac.uk)**

Published by:

Faculty of the Built Environment  
University of the West of England  
Coldharbour Lane,  
Frenchay,  
Bristol  
BS16 1QY, UK

**Don't forget you can always visit our website at:**

**<http://www.eura.org>**